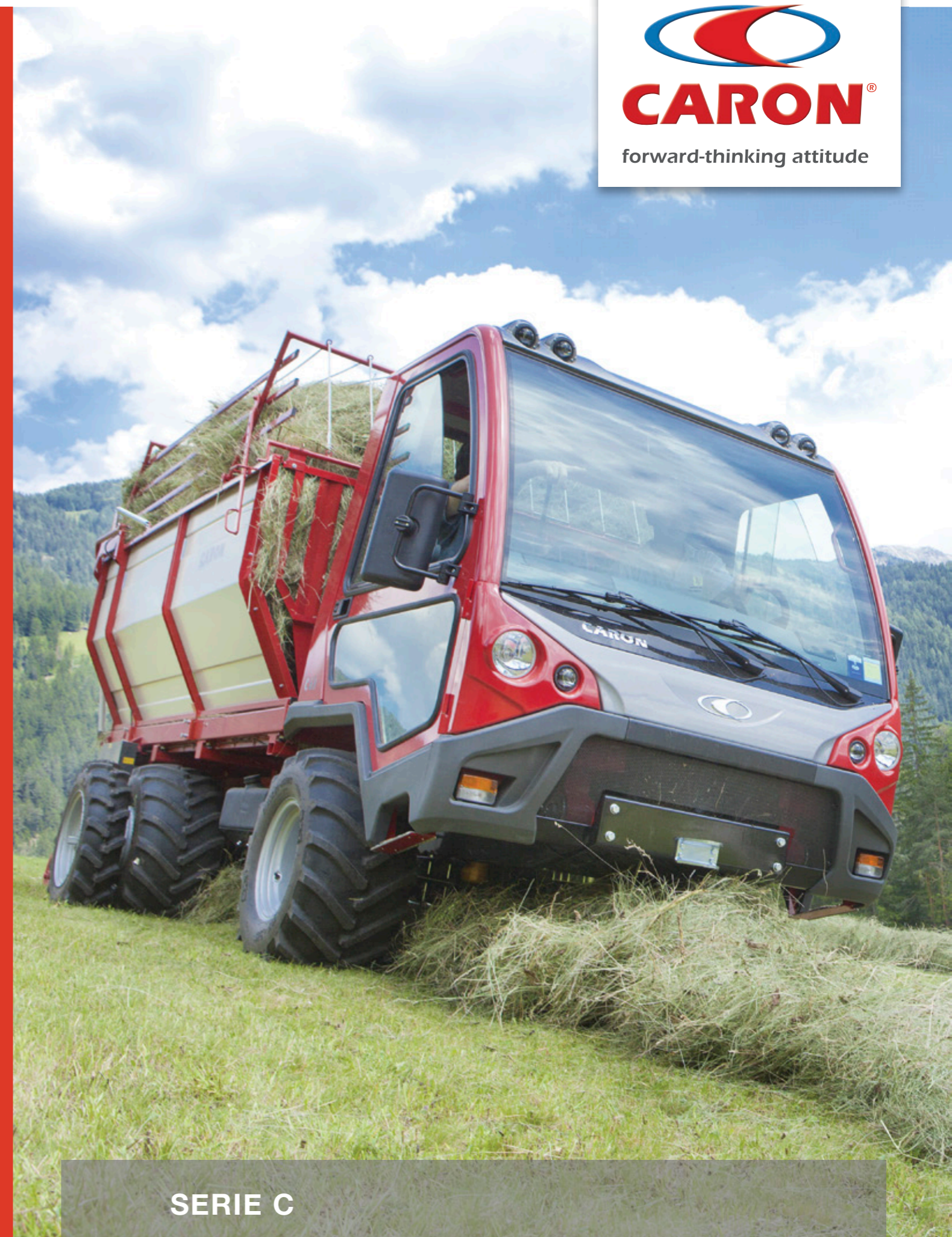


CARON since 1960

Caron is a company in Vicenza developed over the years by specializing exclusively in the production of off-road transport vehicles. Born from a mechanical workshop building special platforms for application to mowers and engine driven cultivators, near the end of the '60s Caron evolved through the design of the first transport vehicles with off-road characteristics. Caron has always concentrated its resources in this particular sector, achieving levels of experience that guarantee the delivery of avant-garde products expressing the essence of quality and efficiency. Caron has been developing its range of products close to the real needs of increasingly demanding customers who need to easily but safely work. The specific axles and gears and every other mechanical structure component in these vehicles are developed by Caron: that means highest reliability and performances.

Nowadays Caron is one of the leading manufacturers of transporters in the world.



SERIE C

SERIE C



The transporters of C series are built for those operators who need a manageable and handy vehicle on every grounds without giving up to comfort and safety. Total approved weight of 5000 kg and loading capacity up to 3300 kg. The 40 and 50 hp Lombardini engines, with 3 and 4 cylinders, are approved according to the latest pollutant emission standards and offer excellent performances but with low consumption.





Reliability and versatility

In spite of the widened inner dimensions of the cab, the Series C remains a compact vehicle, with a strong but light structure, easy to handle in any circumstances, on bristly grounds in the forestry and agriculture or through the narrow alleys in historical centres in the building and municipal fields. The machine can be fitted according to the operators needs, with central (with independent hydraulic clutch) and rear PTOs, with rear 3-point linkage and hydraulic distributors with outlets in front of or rear the cab. These options permit to mount a lot of different equipments making the Series C a versatile vehicle, able to satisfy any kind of work.

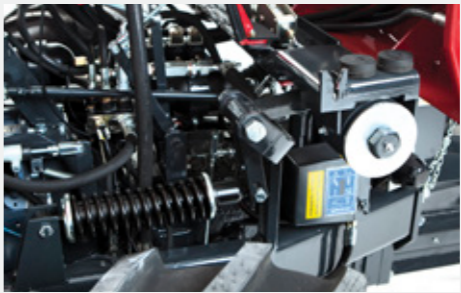




Cab



Anatomically shaped seats with a wide adjustment's possibility of the cushion, back and of the suspensions



The suspensions and oil silent-block system guarantees comfort under any operating conditions and eliminates rolls on slopes



The dashboard provides all the information necessary for the right use of the vehicle



The column steering wheel can be manually adjusted (height and inclination)

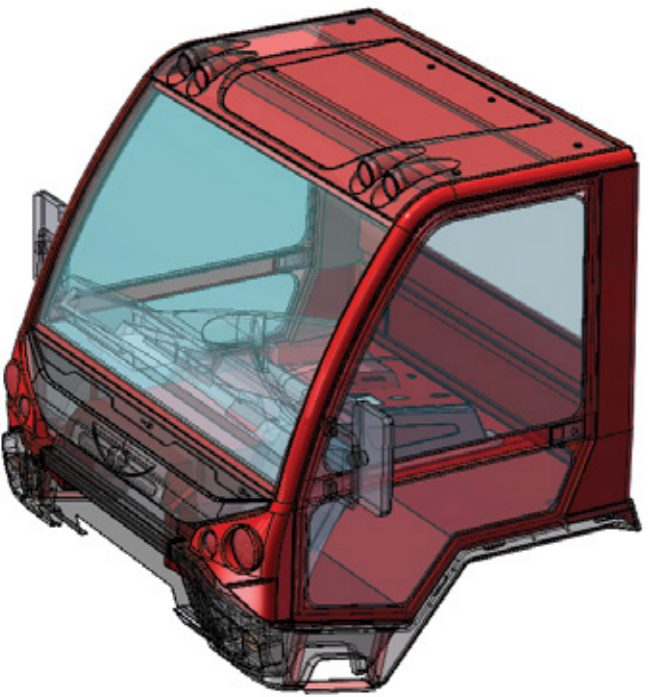


Adjustable heating system of the cab. Upon request, air conditioning system



Radio with MP3 Reader and USB inlet. Audio system with two speakers

E



The cab has been designed to offer a more comfortable and less stressful workplace to the users during the most demanding operating cycles. To achieve this aim, the inside dimensions have been widened and the overall visibility has been improved by a higher amount of heat-proof panelling. The complete and functional instrumentation looks closely like the automotive cockpits and the four-points suspension system minimizes the vibrations and noises caused by driving on uneven grounds. The cab is approved as ROPS (OECD approvals).



Cab top with integrated additional lights



Sliding window on the rear side of the cab V



Rear wireless videocamera with 6" LCD screen

r



The driving position has been carefully developed to reach high comfort and visibility. The wide adjustments of the seats and of the steering column allow the operator to find the perfect driving position at any time. Electro-hydraulic controls and levels are simply and intuitive, placed with the greatest ergonomics.



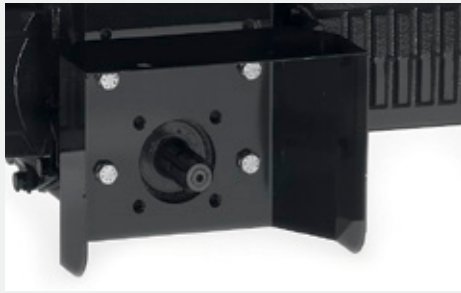
P~
Central PTO with independent hydraulic clutch and electro-hydraulic control, 540 rpm



Removable hydraulic rear 3-point linkage, suitable for the transport of equipment such as cranes and forest cranes, winches, woodcutting machine, and so on



Hydraulic distributor with 3 remote levers, flow rate control and 5 outlets rear the cab



T
Rear PTO with 540-1000 rpm



S
Rear 3-points linkage system with 500 kgm lifting torque



Hydraulic version with front outlets to apply equipment on the fixing plate



Rear drawbar hitch approved up to 5.000 kg.



Plastic tank with metal protection support

Thanks to a hydraulic piston, the cab can be manually dumped in a few seconds. The dumping system of the cab permits an easier and faster maintenance.



Toolbox placed under the loading platform



Battery master-switch for the rest period



Equipment



Hydraulic 3-way dumping box, with reinforced loading platform, tubular sides and protection grid for the cab. Available in different sizes



The series C is an efficient and reliable vehicle on all ground conditions. Differently from traditional vehicles with suspensions, Caron transporters have a central joint in the rigid chassis that keeps all 4 wheels constantly adherent also on difficult grounds and stability with all kinds of equipment. The gearbox offers in total 24 speeds (16 forward + 6 reverse); the four wheels drive, with the possibility to disengage the front wheel drive, and the differential lock guarantee a reliable drive under all conditions. The brakes plant with dual hydraulic system an floating jaws, type "Miniservo", acting on the 4 wheels guarantees total safety.

Technical features



The central joint in the chassis ensures constant grip of the four wheels also on the most uneven surfaces.



Through the dual hydraulic circuit braking system with floating jaws, Ø 290 mm, type "Miniservo", the vehicle stops within a reduced space on any kind of ground. So the operator can work and move high loads up to a total approved mass of 7500 kg in complete safety and reliability.

Motori - Engine - Motor

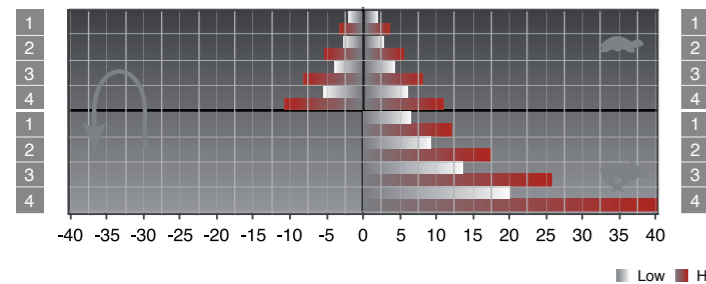
C 52

Motore - Engine - Motor	Lombardini LDW2204
n° Cil. / cm1	4 / 2199
Potenza - Power - Potencia	36,6 kW (50 CV) @ 3000 rpm
Raffreddamento - Refrigeración - Cooling System	Acqua - Water - Agua
Emission certificate	Stage 3A

C 40

Motore - Engine - Motor	Lombardini LDW1603
n° Cil. / cm1	3 / 1649
Potenza - Power - Potencia	29 kW (40 CV) @ 3000 rpm
Raffreddamento - Refrigeración - Cooling System	Acqua - Water - Agua
Emission certificate	Stage 3A

Cambio - Gearbox - Cambio



Through the 24-speed (16+8) CARON synchronized gearbox the driver can always find the right speed to get the most appropriate power during any job.

Pneumatici - Tyres - Neumaticos

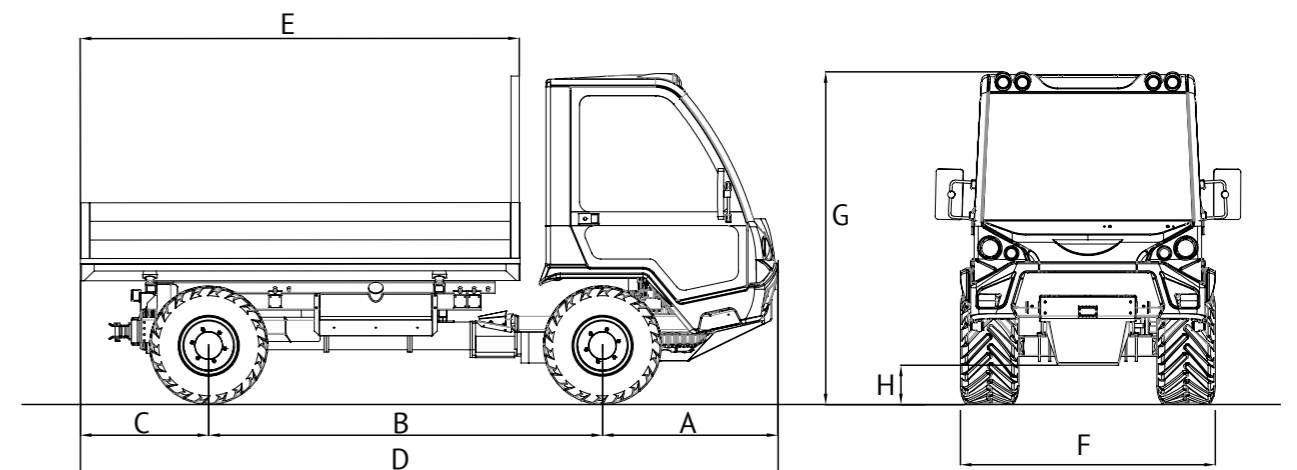


280/70 R16 Tractor 280/70 R16 Garden 31x15.50-15

Dual wheels 7.00x16 with quick connecting hooks (on rear axle)

R

CABINA CAB CABINA	Cabina a 2 posti montata su sospensioni e silent-block idraulici, insonorizzata e con sistema di ribaltamento / Two-seats dumping cab mounted on dampers and hydraulic silent blocks, sound-proofed / Cabina insonorizada de dos asientos, abatible, montada sobre amortiguadores y silentblocks hidráulicos
TELAIO CHASSIS CHASIS	Assali rigidi con snodo lineare centrale incorporato / Rigid axles with central joint / Ejes rígidos, con articulación central
STERZO JOINT ARTICULACIÓN	Iraulico sulle ruote anteriori / Hydraulic steering on the front wheels / Dirección hidráulica en las ruedas delanteras
FRENI SERVIZIO BRAKING SYSTEM SISTEMA DE FRENADO	Iraulici a doppio circuito agenti sulle 4 ruote con masse frenanti flottanti / Dual hydraulic circuit braking system on 4 wheels, with floating jaws / De doble circuito hidráulico en las 4 ruedas, con masas flotantes
FRENI DI STAZIONAMENTO PARKING BRAKE FRENO ESTACIONAMIENTO	Meccanico agente su entrambi gli assi A richiesta: a molla sulle ruote posteriori con comando idraulico e modulatore progressivo / Mechanic on front and rear wheels On request: spring parking brake on rear wheels acting with hand lever and hydraulic transmission / Mecánico que actúa en los dos ejes. Bajo pedido: Freno de estacionamiento de muelles que actúa sobre las ruedas traseras con mando hidráulico y modulador progresivo
CAMBIO GEARBOX CAMBIO	Sincronizzato a 24 velocità (16+8) / 24 speeds-synchronized gearbox (16+8) / Sincronizado de 24 velocidades (16+8)
VEL. MAX. MAX SPEED MAX VELOCIDAD	40 Km/h
TRAZIONE DRIVE TRACCIÓN	4 ruote motrici con disinnesto della trazione anteriore / 4 wheel drive, with reducers and disengagement of front drive / Cuatro ruedas motrices con desembrague electrohidráulico de la tracción delantera
DIFFERENZIALI DIFFERENTIALS DIFERENCIALES	Su entrambi gli assi con bloccaggio del differenziale posteriore, a richiesta anche anteriore / On both axles with rear differential lock On request with also front differential lock / En los dos ejes con bloqueo del diferencial trasero, bajo pedido delantero también
MASSA TOTALE TOTAL WEIGHT PESO TOTAL	5.000 Kg
MASSA A VUOTO UNLADEN WEIGHT PESO EN VACÍO	2.400 kg (con cassone / with body / con caja)
RIMORCHIABILE TOWING REMORCABLE	Fino a / Up to / hasta 5.000 kg
CASSONE BODY CAJA	Rinforzato con sponde in tubolare, ribaltabile trilaterale a comando idraulico / Reinforced, with tubular sides, 3-way hydraulic dump body / Reforzada, con puertas de tubular, basculante trilateral con mando hidráulico
PRESA DI FORZA POWER TAKE OFF TOMA DE FUERZA	PTO posteriore standard a 540-1000 giri/min. A richiesta: presa di forza centrale con frizione idraulica indipendente a 540 giri/min. / Rear standard PTO with 2 speeds, 540/1000 rpm. Upon request: central PTO with independent hydraulic clutch 540 rpm / Toma de fuerza mecánica en el eje trasero, 540-1000 rpm Bejo pedido: centrale con embrague hidráulico indipendente (540 rpm/min)
IMPIANTO IDRAULICO HYDRAULIC PLANT SISTEMA HIDRAULICO	Varianti idrauliche con innesti rapidi davanti e/o dietro cabina. Pompa con portata max 24 litri/min. a 170 bar. / Hydraulic versions with outlets in front of and/or rear the cab; Pump with max flow of 24 l/min (170 bars) / Versiones hidráulicas con tomas detrás y/o odelante la cabina; Bomba de caudal max 24 l/min a 170 bar
OPTIONALS	Gancio traino omologato; Sollevatore posteriore con attacco a tre punti; Porta attrezzi posteriore rimovibile; Piastra porta-attrezzi anteriore. / Approved drawbar hitch; Rear 3-point linkage; Removable rear 3-point linkage; Front fixing plate for equipment; / Enganche remolque homologado; Elevador trasero de tres puntos; Portaequipos trasero de 3 puntos; Placa enganche delantera para equipos
PNEUMATICI TYRES NEUMATICOS	280/70 R16 (profilo tractor) - 280/70 R16 (profilo garden) - 31x15.50-15 Coppia ruote gemelle posteriori 7.00x16 / 280/70 R16 (tractor) - 280/70 R16 (garden) - 31x15.50-15 Dual wheels 7.00x16 with quick connecting hooks on rear axle / 280/70 R16 (agricolas) - 280/70 R16 (garden) - 31x15.50-15 Ruedas gemelas 7.50x16 en el eje trasero



Dimensioni - Abmessungen - Dimensions (cm)							
A	B	C	D	E	F	G	H
128	222-238	116	466-482	256-276	170	230	26