

1.7x1.7  
SK1700

	Hg (m)	
FEM	○	□
CATR	51.7	50.9
CAF	58.8	58
TEF	58.8	58
TRF	58	57.2

C25	○	□
CATR	51.7	50.9
CAF	58.8	58
TEF	58.8	58
TRF	58	57.2

D25	○	□
CATR	43.9	43.1
CAF	43.2	42.4
TEF	47.1	42.4
TRF	46.3	45.5

- ① CATR
- CAF
- TEF
- TRF
- PRT-TR
- PRT

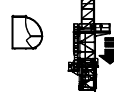
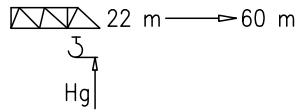
Power Control ASsys ACsys ULTRALIFT

**CE** FEM 1.001 - A4  
EN 14439 - C25 - D25

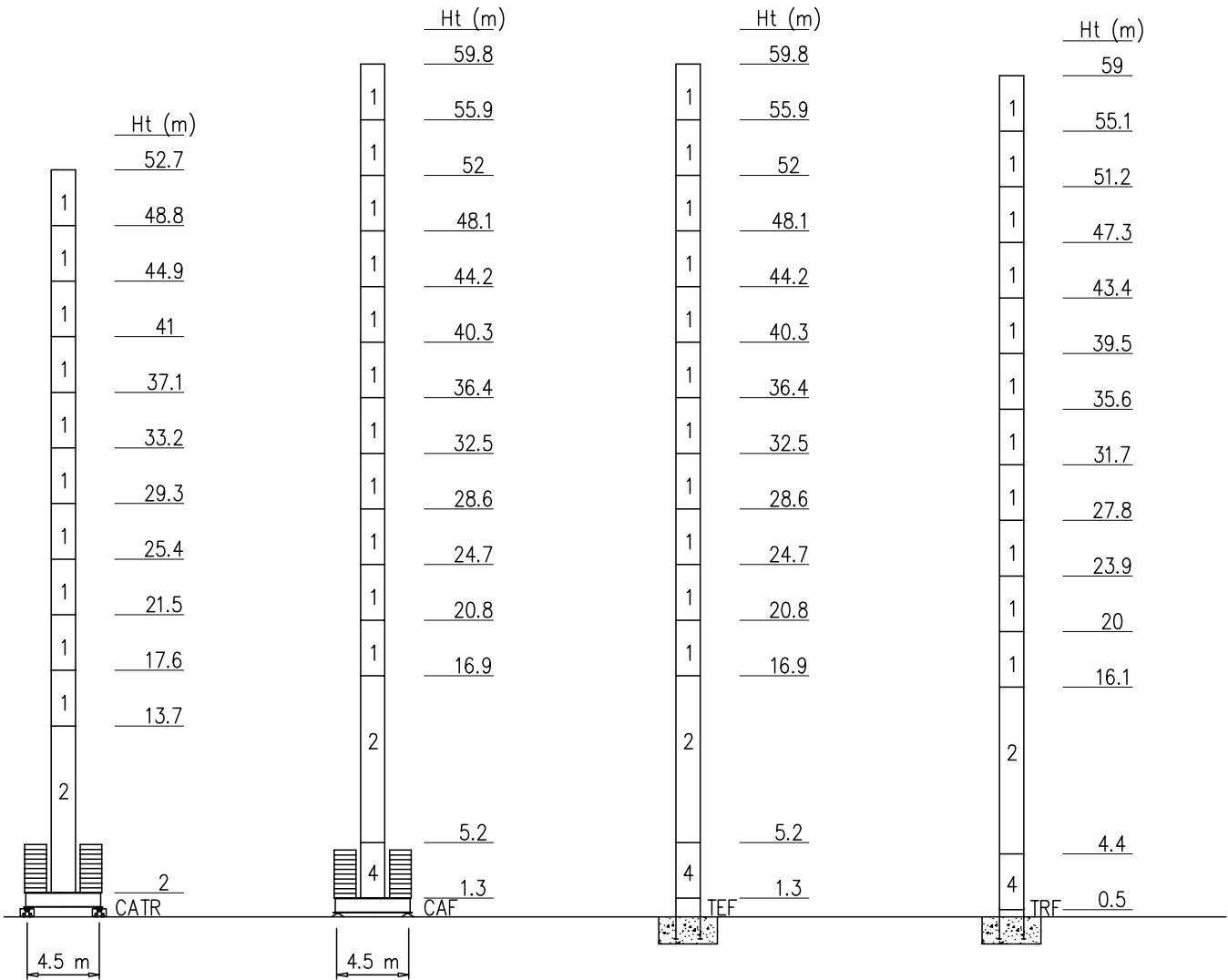
Torre/Reazioni – Masts/Reactions – Mat/Réactions – Maste/Eckdrücke – Mästil/Reacciones – Tramo/Reacções

SK1700 FEM

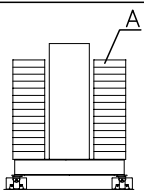
- Hg=Ht-1 m
- Hg=Ht-1.8 m



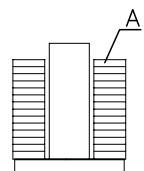
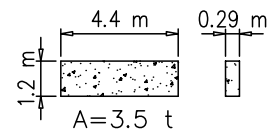
4	BPF039	4/4
3	ST117	2/2
2	BAF117	4/2
1	ST039	2/2



Peso zavorra – Ballast weight – Poids du lest – Ballastgewicht – Peso de lastre



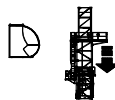
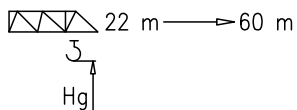
SK1700			
H-CATRO20 (m)	48.8	52.7	
FEM (t)	77	98	
n°	22xA	28xA	



SK1700											
H-CAF013 (m)	24.7	28.6	32.5	36.4	40.3	44.2	48.1	52	55.9	59.8	
FEM (t)	42	49	49	56	63	70	84	98	119	147	
n°	12xA	14xA	14xA	16xA	18xA	20xA	24xA	28xA	34xA	42xA	

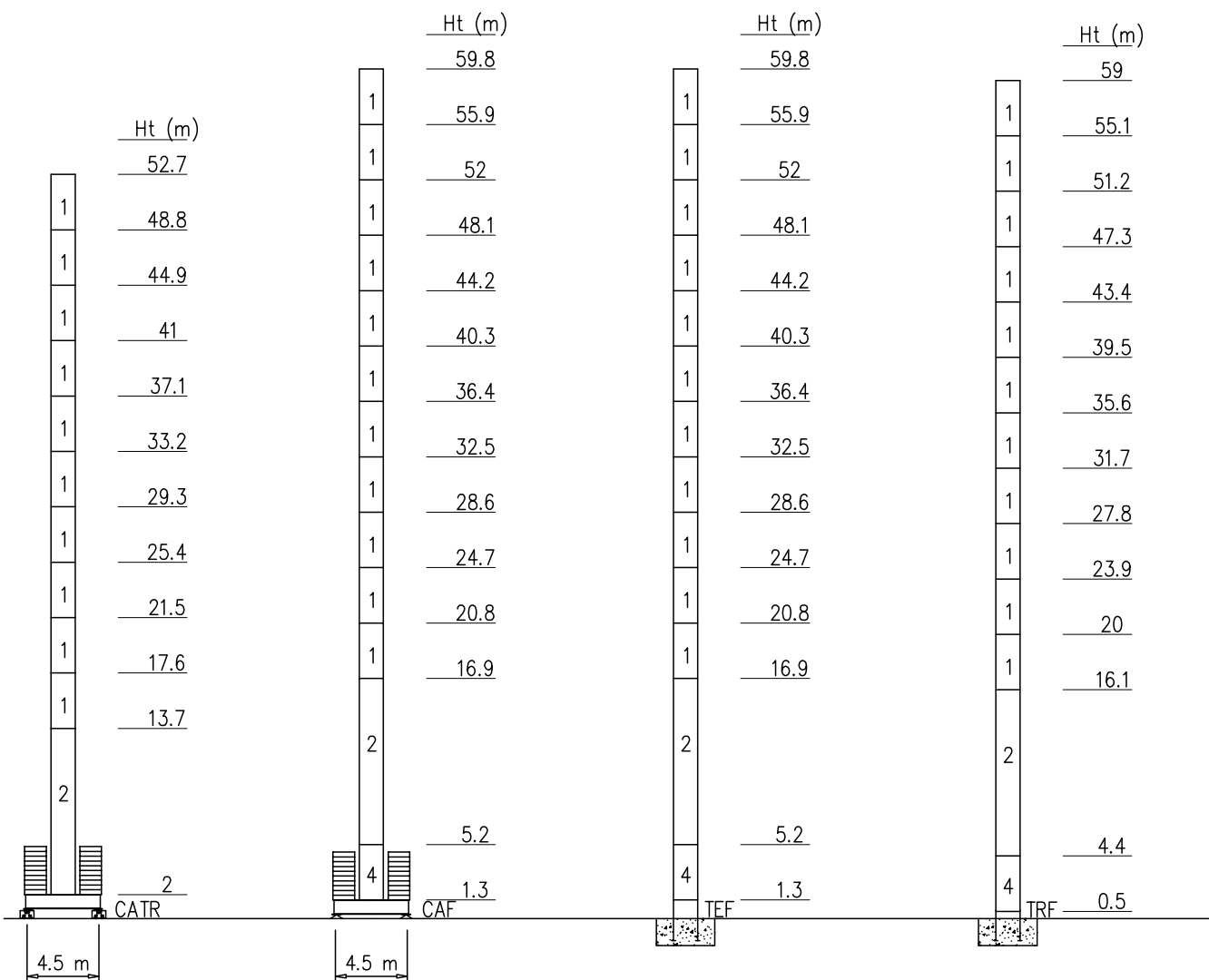
Torre/Reazioni – Masts/Reactions – Mat/Réactions – Maste/Eckdrücke – Măstil/Reacciones – Tramo/Reacções

SK1700 EN14439-C25

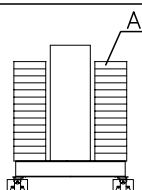


4	BPF039	4/4
3	ST117	2/2
2	BAF117	4/2
1	ST039	2/2

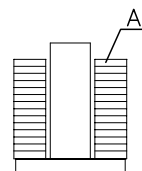
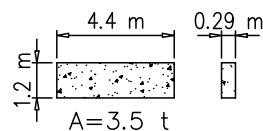
- Hg=Ht-1 m
- Hg=Ht-1.8 m



Peso zavorra – Ballast weight – Poids du lest – Ballastgewicht – Peso de lastre



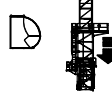
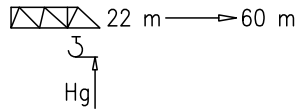
SK1700		
H-CATRO20 (m)	48.8	52.7
C25 (t)	84	119
n°	24xA	34xA



SK1700										
H-CAF013 (m)	24.7	28.6	32.5	36.4	40.3	44.2	48.1	52	55.9	59.8
C25 (t)	42	49	49	56	63	70	84	119	126	154
n°	12xA	14xA	14xA	16xA	18xA	20xA	24xA	34xA	36xA	44xA

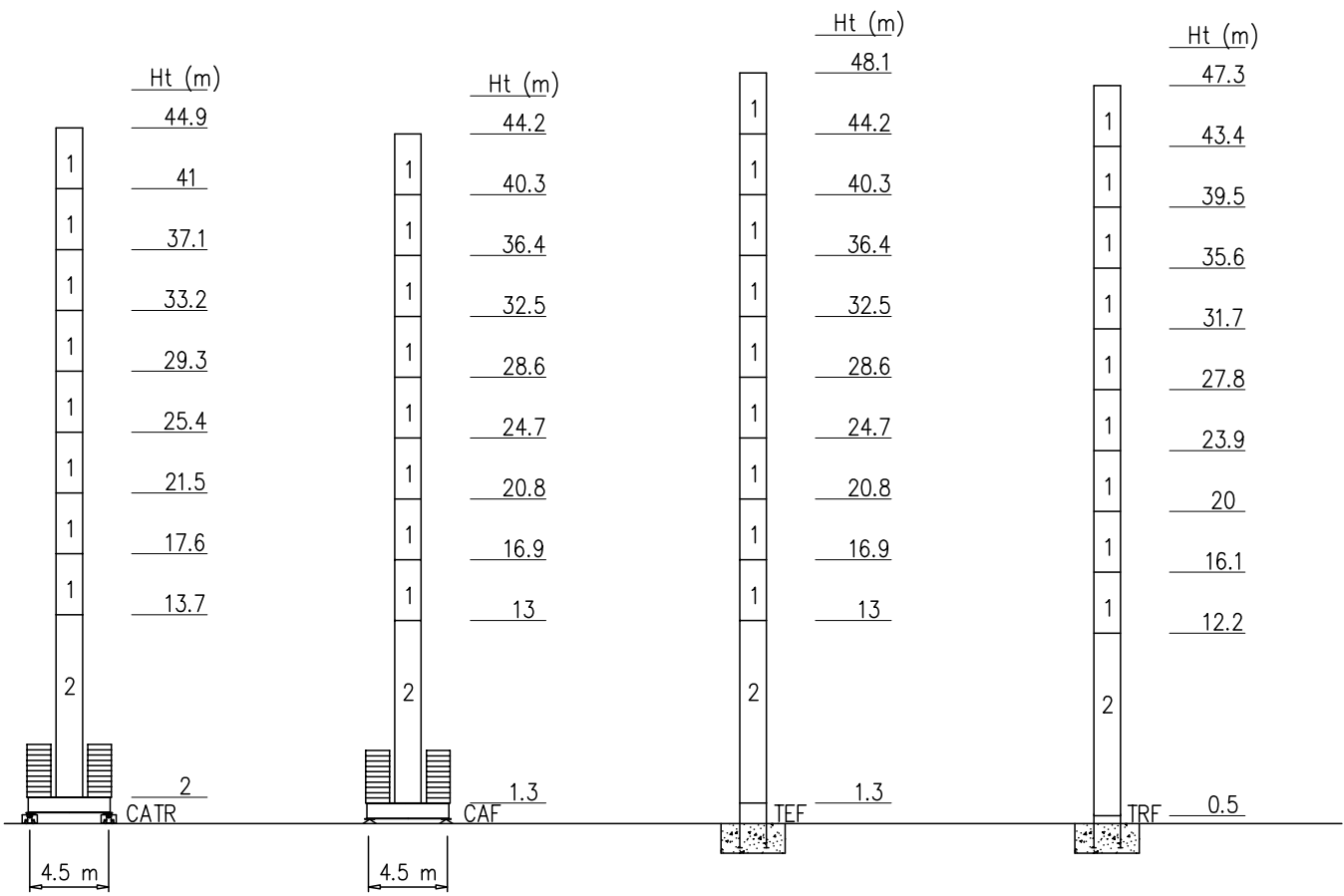
Torre/Reazioni – Masts/Reactions – Mat/Réactions – Maste/Eckdrücke – Măstil/Reacciones – Tramo/Reacções

SK1700 EN14439-D25

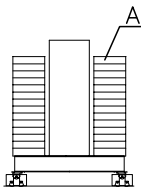


- Hg=Ht-1 m
- Hg=Ht-1.8 m

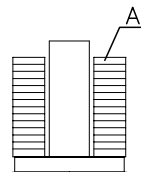
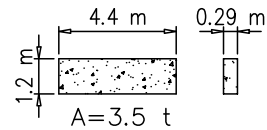
4	BPF039	4/4
3	ST117	2/2
2	BAF117	4/2
1	ST039	2/2



Peso zavorra – Ballast weight – Poids du lest – Ballastgewicht – Peso de lastre



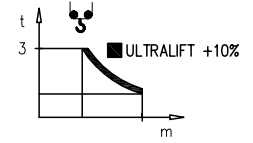
SK1700	
H-CATRO20 (m)	44.9
D25 (t)	119
n°	34xA



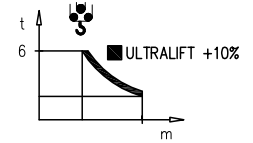
SK1700						
H-CAF013 (m)	24.7	28.6	32.5	36.4	40.3	44.2
D25 (t)	49	49	56	63	77	119
n°	14xA	14xA	16xA	18xA	22xA	34xA

Curve di carico – Courbes de charges – Load diagrams – LastKurven – Curvas de cargas

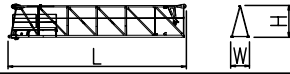
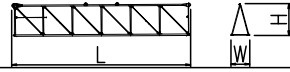
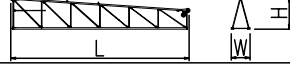
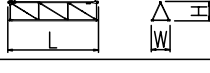
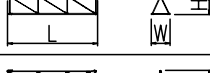
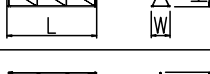
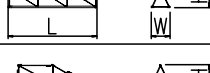
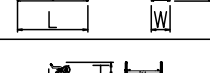

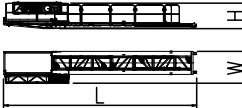

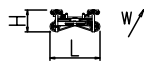
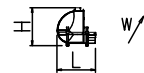
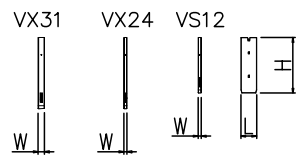
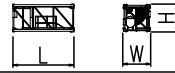

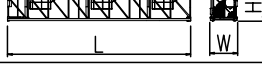
	18360 kg		2	32	35	37.5	40	42.5	45	47.5	50	52.5	55	60	m
			<b>3000</b>	3000	2740	2500	2320	2150	2000	1850	1740	1630	1500	1350	kg
	18360 kg		2	33	35	37.5	40	42.5	45	47.5	50	52.5	55	m	
			<b>3000</b>	3000	2890	2620	2450	2270	2100	1950	1840	1730	1600	kg	
	18360 kg		2	35	37.5	40	42.5	45	47.5	50	m				
			<b>3000</b>	3000	2740	2580	2400	2200	2080	1950	kg				
	17160 kg		2	37	37.5	40	42.5	44.5	m						
			<b>3000</b>	3000	2930	2770	2600	2450	kg						
	17160 kg		2				38.5	m							
			<b>3000</b>				3000	kg							
	15600 kg		2	33	m										
			<b>3000</b>	3000	kg										
	12480 kg		2	22	m										
			<b>3000</b>	3000	kg										



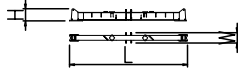
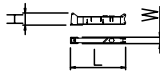
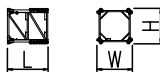

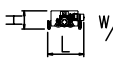
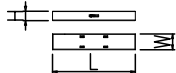
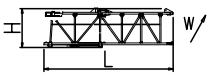
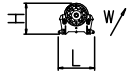
	18360 kg		2	17.8	20	22.5	25	27.5	30	32.5	35	37.5	40	42.5	45	47.5	50	52.5	55	60	m
			<b>6000</b>	6000	5230	4700	4000	3600	3190	2930	2610	2400	2190	2000	1900	1740	1600	1500	1360	1200	kg
	18360 kg		2	18.5	20	22.5	25	27.5	30	32.5	35	37.5	40	42.5	45	47.5	50	52.5	55	m	
			<b>6000</b>	6000	5480	4800	4200	3700	3360	3000	2760	2500	2310	2130	2000	1800	1700	1570	1450	kg	
	18360 kg		2	19.3	20	22.5	25	27.5	30	32.5	35	37.5	40	42.5	45	47.5	50	m			
			<b>6000</b>	6000	5740	5000	4400	3950	3520	3200	2900	2600	2440	2240	2130	1930	1800	kg			
	17160 kg		2	20.4	22.5	25	27.5	30	32.5	35	37.5	40	42.5	44.5	m						
			<b>6000</b>	6000	5350	4710	4200	3780	3410	3120	2880	2630	2400	2300	kg						
	17160 kg		2	21.2	22.5	25	27.5	30	32.5	35	38.5	m									
			<b>6000</b>	6000	5550	4950	4450	3980	3610	3290	2900	kg									
	15600 kg		2	22.5	25	27.5	30	33	m												
			<b>6000</b>	6000	5300	4720	4270	3800	kg												
	12480 kg		2	22	m																
			<b>6000</b>	6000	kg																



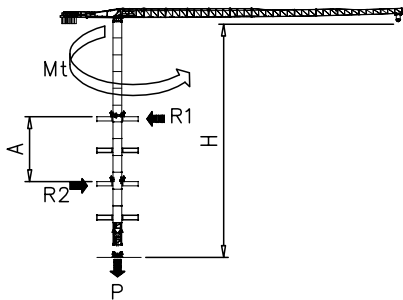
PESI E INGOMBRI – PACKING LIST – LISTE DE COLISAGE – GEWICHT UND ABMESSUNGEN

Denominazione Description	Disegno Draw	Pezzi Pieces	Dimensioni-Dimensions (mm)			Peso-Weight (kg)		
			L	W	H	Unit	Total	
Elemento di braccio Jib element Elément de èche Elemento de flecha	n°8 	1	11400	1100	2280	2520	–	
	n°7 	1	11425	1100	2055	1430	–	
	n°6 	1	11400	1100	2055	1120	–	
	n°5 	1	5790	1100	1610	470	–	
	n°4 	1	5755	1100	1610	360	–	
	n°3 	1	5725	1100	1260	270	–	
	n°2 	1	5680	1100	1260	235	–	
	n°1 	1	4500	1100	1260	160	–	
	Punta braccio 	1	700	1100	500	45	–	
Controbraccio completo Complete counterjib Contreflèche complète Contraflecha completa		1	10350	1710	1400	2500	–	
Gruppo girevole Slewing group Table tournante Grupo giratorio	TK1700 	1	2300	1810	2900	4500	–	
Carrello Trolley Chariot Carretilla	P8 	1	1600	1620	710	370	–	
Ballatoio con cabina Access balcony with cabin Porte cabine Balcòn corrido con cabina		1	2500	2150	2450	1000	–	
Blocchi contrappeso Counterweight block Contre-poids Bloques de contrapeso		VS12	1	1000	200	2500	1200	1200
		VS15	1	1000	200	3550	1560	1560
		VX31	5	1000	400	3550	3120	15600
Elemento di torre Mast element Elément de mature Elemento de torre	ST039 	SK1700	–	3900	1785	1785	1750	–
	ST117 	SK1700	–	11700	1785	1785	4690	–
	BAF117 	SK1700	–	11700	1785	1785	7100	–

PESI E INGOMBRI – PACKING LIST – LISTE DE COLISAGE – GEWICHT UND ABMESSUNGEN

Denominazione Description	Disegno Draw	Pezzi Pieces	Dimensioni-Dimensions (mm)			Peso-Weight (kg)		
			L	W	H	Unit	Total	
Carro di base Base carriage Chassis de base Cruceta de base		4.5x4.5	1	7550	800	1100	4500	4500
		4.5x4.5	2	3530	500	1100	2060	4120
Elemento a perdere Disposable frame Chassis a perdre Bastidor desechable		SK1700	1	1840	1910	1910	1430	–
Elemento recuperabile Recoverable frame Chassis récupérable Bastidor recuperable		SK1700	1	1300	2170	2170	1720	–
Bogie di traslazione Driven bogie Boggie motorisèe Balancin de traslaciòn			4	1160	700	600	700	2800
Blocco zavorra di base Base ballast block Lest de base Blaque de lastre		4.5x4.5	–	4400	1200	290	3500	
Corsoio di montaggio Climbing cage Cage de montage Jaula de montaje		SK1700	1	8300	2600	2500	6000	–
Argano sollevamento Hoisting winch Treuli de levage Mecanismo de elevaciòn		V33.60	1	930	790	2300	1250	–
		V45.90	1	930	840	2300	1570	–
		V45.120	1	930	900	2300	1600	–
		V25.60	1	930	840	2300	800	–
		V33.90	1	930	840	2300	1400	–

GRU IN CAVEDIO – TELESCOPAGE SUR DALLES – CLIMBING CRANE – KLETTERKRANE IM GEBAUDE

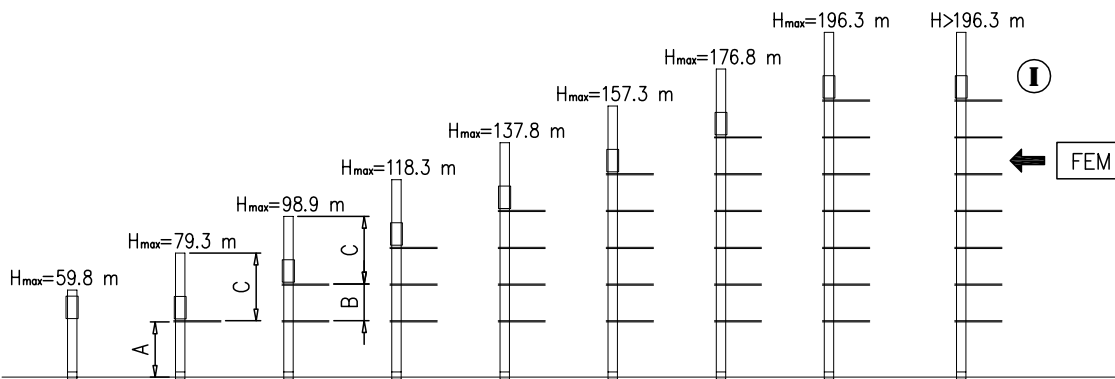
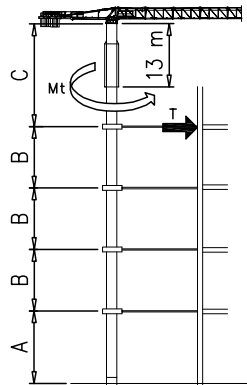


SK1700	H (m)	A (m)
	39	Min 9
Apertura passaggio gru Opening for crane passing 		Max 12

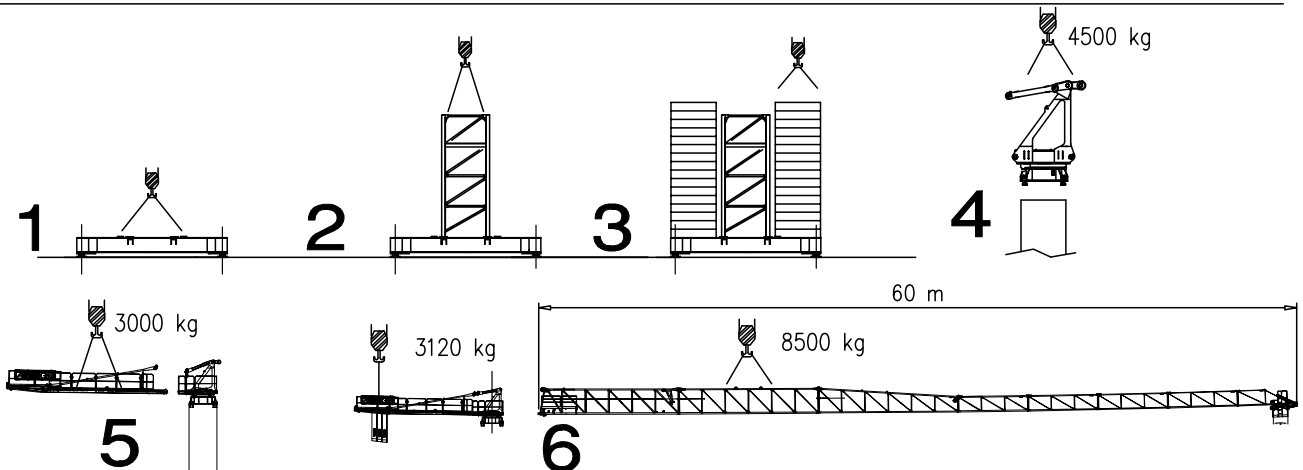
II= in servizio con vento – in service with wind – III= fuori servizio con vento 150 km/h – out of service with wind 150 km/h  
SOPRALZO IDRAULICO – TELESCOPABLE – EXTERNAL CLIMBING – KLETTERKRANE

FEM

		SK1700	
		II	III
MAX	C	32.5 m	
	B	19.5 m	
	A	46.8 m	



Montaggio – Montage – Erection – Montage – Montaje – Montagem





Meccanismi – Mechanisms – Mécanismes – Antriebe – Mecanismos

P6   V25.60															
Sollevamento Hoisting Levage Heben Elevaciòn Elevaçao	m/min	7	18	28	42	56	65	3.5	9	14	21	28	32.5	V25.60	
	t	3	3	3	2.25	1.5	0.9	6	6	6	4.5	3	1.8	18.4 kW	
														37 kVA	
														172 m	344 m (L)
P6   V30.90															
Sollevamento Hoisting Levage Heben Elevaciòn Elevaçao	m/min	3	18	34	54	70	90	1.5	9	17	27	35	45	V30.90	
	t	3	3	3	1.8	1.3	0.5	6	6	6	3.6	2.6	1	22 kW	
														47 kVA	
														380 m	760 m (L)
P6   V45.120															
Sollevamento Hoisting Levage Heben Elevaciòn Elevaçao	m/min	4	18	40	64	90	120	2	9	20	32	45	60	V45.120	
	t	3	3	3	1.9	1.1	0.6	6	6	6	3.8	2.2	1.2	33 kW	
														58 kVA	
														340 m	680 m (L)
Carrello Trolleying Distribution Katzfahren Distribuciòn Distribuiçao						0 → 80		m/min		5.5 kW				Potenza elettrica necessaria Puissance électrique nécessaire Necessary electric power Anschlusswert – Potencia	
Rotazione Slewing Orientation Schwenken Orientaciòn Rotaçao						0 → 0,9		giri/min tr/min rp/min		4.4 kW @ 1200rpm n° 2 x 2.2 kW (n°2x6.5 kgm)					
Traslazione Travelling Translation Kranfahren Traslaciòn Traslaçao						0 → 20		m/min		7.5 kW					
Rete elettrica – Réseau – Mains supply – Netzstrom – Red – Rede electrica										400V – 50 Hz					
FEM 1.001 – A4															
EN 14439 – C25 – D25															