

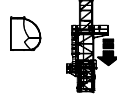
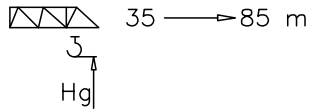
Power Control ASsys ACsys ULTRALIFT



FEM 1.001 – A4
EN 14439 – C25

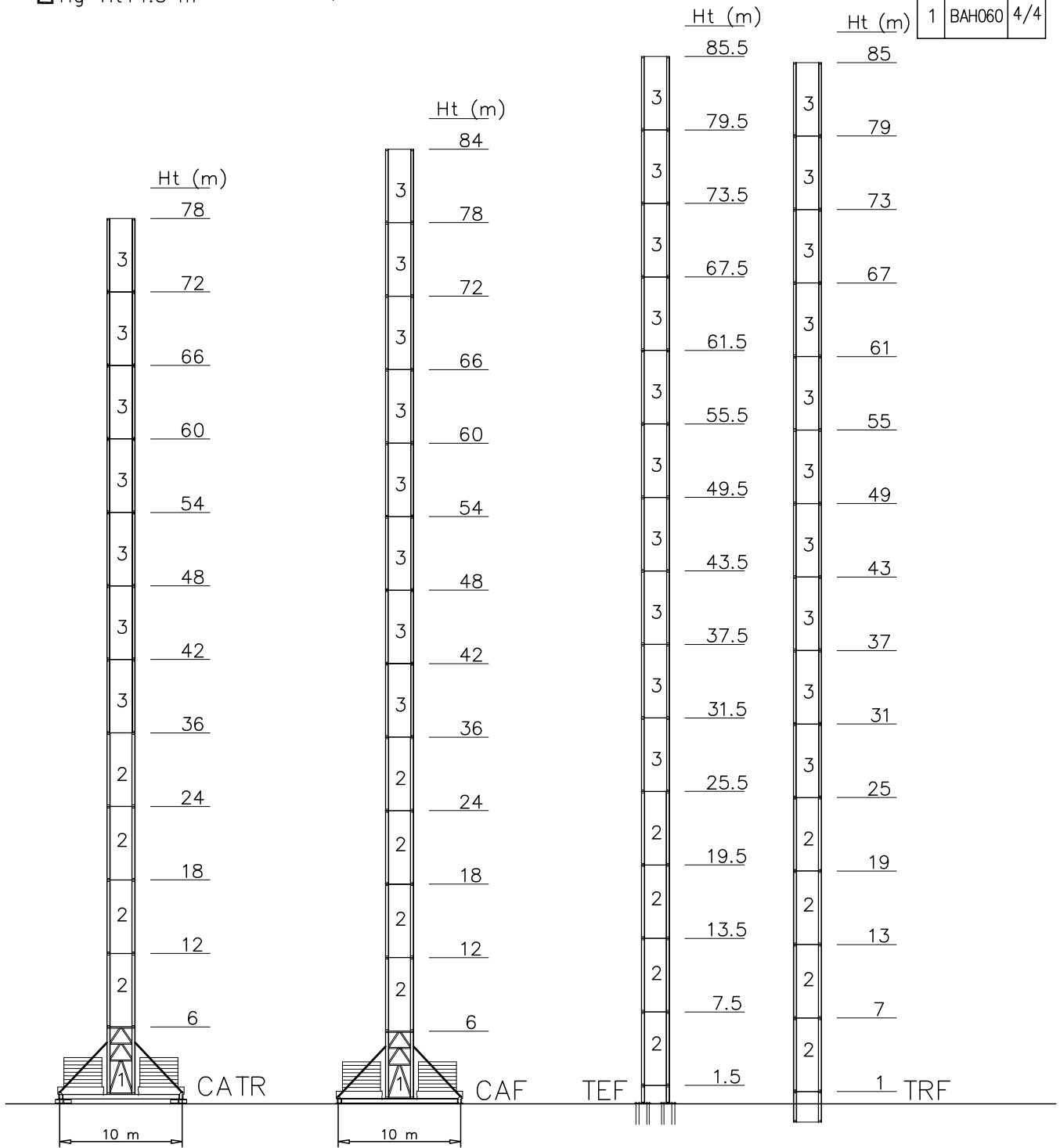
Torre/Reazioni - Masts/Reactions - Mat/Réactions - Maste/Eckdrücke - Mástil/Reacciones - Tramo/Reacções

HP2300 FEM



- Hg=Ht+2 m
- Hg=Ht+1.5 m

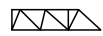
3	STH060	4/4
2	BOH060	4/4
1	BAH060	4/4

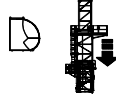


NOTE · Notizen · Note · Apunte · Appunti · Notas · Заменку

Torre/Reazioni - Masts/Reactions - Mat/Réactions - Maste/Eckdrücke - Mástil/Reacciones - Tramo/Reaçções

HP2300 EN14439-C25

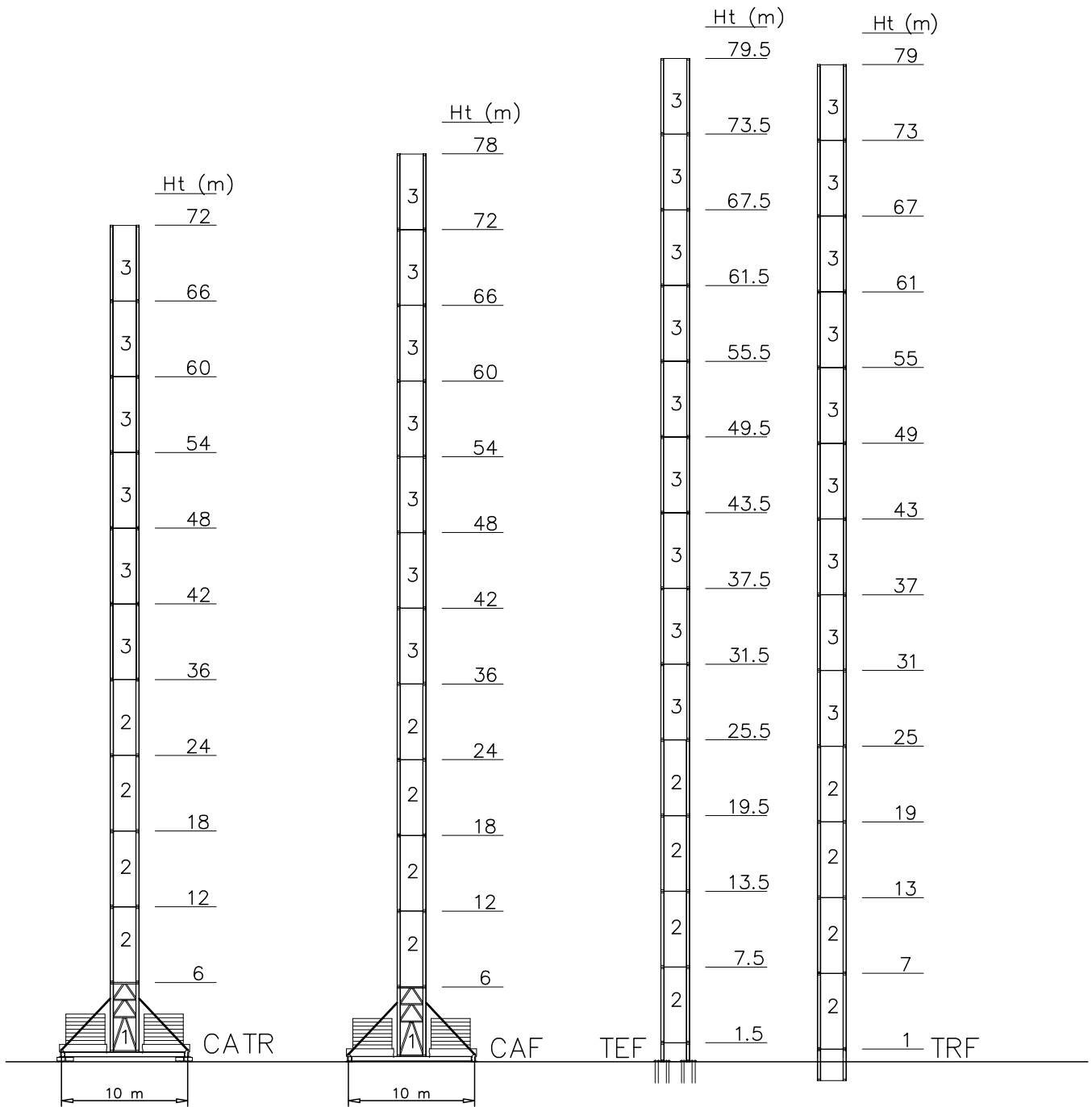
 35 → 85 m



- Hg=Ht+2 m
- Hg=Ht+1.5 m



3	STH060	4/4
2	BOH060	4/4
1	BAH060	4/4

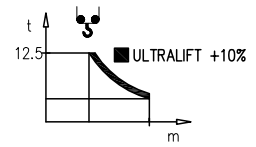


NOTE · Notizen · Note · Apunte · Appunti · Notas · Заменку

Curve di carico – Courbes de charges – Load diagrams – LastKurven – Curvas de cargas

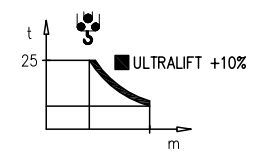
Pmax 12500 kg

	29640 kg	85 m	3.5	28	30	35	40	45	50	55	60	65	70	75	80	85
			12500	12500	11500	9460	7940	6770	5840	5070	4440	3900	3450	3050	2700	2400
	29640 kg	80 m	3.5	31.7	35	40	45	50	55	60	65	70	75	80		
			12500	12500	11070	9350	8020	6950	6090	5370	4760	4240	3790	3400		
	29640 kg	75 m	3.5	36.2	40	45	50	55	60	65	70	75				
			12500	12500	11060	9540	8320	7330	6500	5810	5220	4700				
	29640 kg	70 m	3.5	38.9	40	45	50	55	60	65	70					
			12500	12500	12100	10450	9140	8080	7190	6440	5800					
	28080 kg	65 m	3.5	41.8	45	50	55	60	65							
			12500	12500	11410	10000	8860	7900	7100							
	28080 kg	60 m	3.5	43.7	45	50	55	60								
			12500	12500	12070	10600	9400	8400								
	24960 kg	55 m	3.5	46.7	50	55										
			12500	12500	11480	10200										
	24960 kg	50 m	3.5	48.4	50											
			12500	12500	12000											



Pmax 12500/25000 kg

	29640 kg	85 m	3.5	15.1	20	25	30	35	40	45	50	55	60	65	70	75	80	85
			25000	25000	17880	13600	10790	8800	7320	6170	5260	4510	3890	3370	2920	2530	2200	1900
	29640 kg	80 m	3.5	17.1	20	25	30	35	40	45	50	55	60	65	70	75	80	
			25000	25000	20780	15900	12700	10430	8740	7430	6390	5540	4830	4240	3730	3290	2900	
	29640 kg	75 m	3.5	19.5	25	30	35	40	45	50	55	60	65	70	75			
			25000	25000	18710	15020	12410	10470	8970	7770	6790	5980	5290	4710	4200			
	29640 kg	70 m	3.5	21	25	30	35	40	45	50	55	60	65	70				
			25000	25000	20400	16420	13610	11510	9890	8600	7550	6670	5930	5300				
	28080 kg	65 m	3.5	22.5	25	30	35	40	45	50	55	60	65					
			25000	25000	22180	17900	14860	12610	10860	9470	8340	7400	6600					
	28080 kg	60 m	3.5	23.6	25	30	35	40	45	50	55	60						
			25000	25000	23410	18920	15740	13370	11540	10080	8890	7900						
	24960 kg	55 m	3.5	25.2	30	35	40	45	50	55								
			25000	25000	20420	17020	14500	12530	10970	9700								
	24960 kg	50 m	3.5	26.1	30	35	40	45	50									
			25000	25000	21310	17780	15150	13120	11500									
	23400 kg	45 m	3.5	29.9	35	40	45											
			25000	25000	20860	17840	15500											
	21840 kg	35 m	3.5	23.3	25	30	35											
			25000	25000	23070	18640	15500											



Meccanismi – Mechanisms – Mécanismes – Antriebe – Mecanismos

Sollevamento V150.150 Hoisting Levage Heben Elevaçiòn Elevaçao														V150.150 110 kW 130 kVA
	m/min	11.5	29	36	78	123	145	5.75	14.5	18	39	61.5	72.5	
	t	12.5	12.5	12.5	6.27	3.57	2.46	25	25	25	12.24	7.17	5.22	

Carrello Trolleying Distribution Katzfahren Distribuciòn Distribuiçao			0 → 80	m/min	15 kW	Potenza elettrica necessaria Puissance électrique nécessaire Necessary electric power Anschlusswert – Potencia
Rotazione Slewing Orientation Schwenken Orientaciòn Rotaçao			0 → 0,66	giri/min tr/min rp/min	n°4x 80 Nm	
Traslazione Travelling Translation Kranfahren Traslaciòn Translaçao			0 → 20	m/min	n°4x11 kW	

Rete elettrica – Réseau – Mains supply – Netzstrom – Red – Rede electrica	400V – 50 Hz
---	--------------

FEM 1.001 – A4 EN 14439 – C25	
----------------------------------	--